

LibreOffice Quality Assurance

Rob Snelders



LibreOffice
The Document Foundation

Spider 2013

Me

- Java Developer at Sogeti
- Active since 2011
 - Developer
 - QA
 - Dutch Team
- Ubuntu-NL

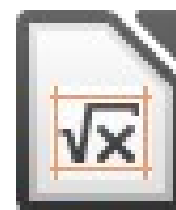
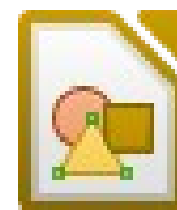
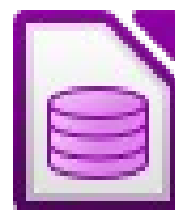
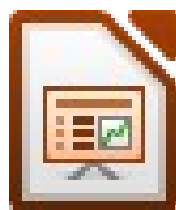
History

- StarOffice (1985)
- OpenOffice.org (2000)
- LibreOffice (2010)



LibreOffice

- Writer
- Calc
- Impress
- Base
- Draw
- Math



- Remote
- Web
- Andriod



- Windows XP/Vista/7/8
- Linux $\geq 2.6.18$
- Mac OS X 10.6

Outline

- Community
- Development
- Bugtracking
- Tests
- Building

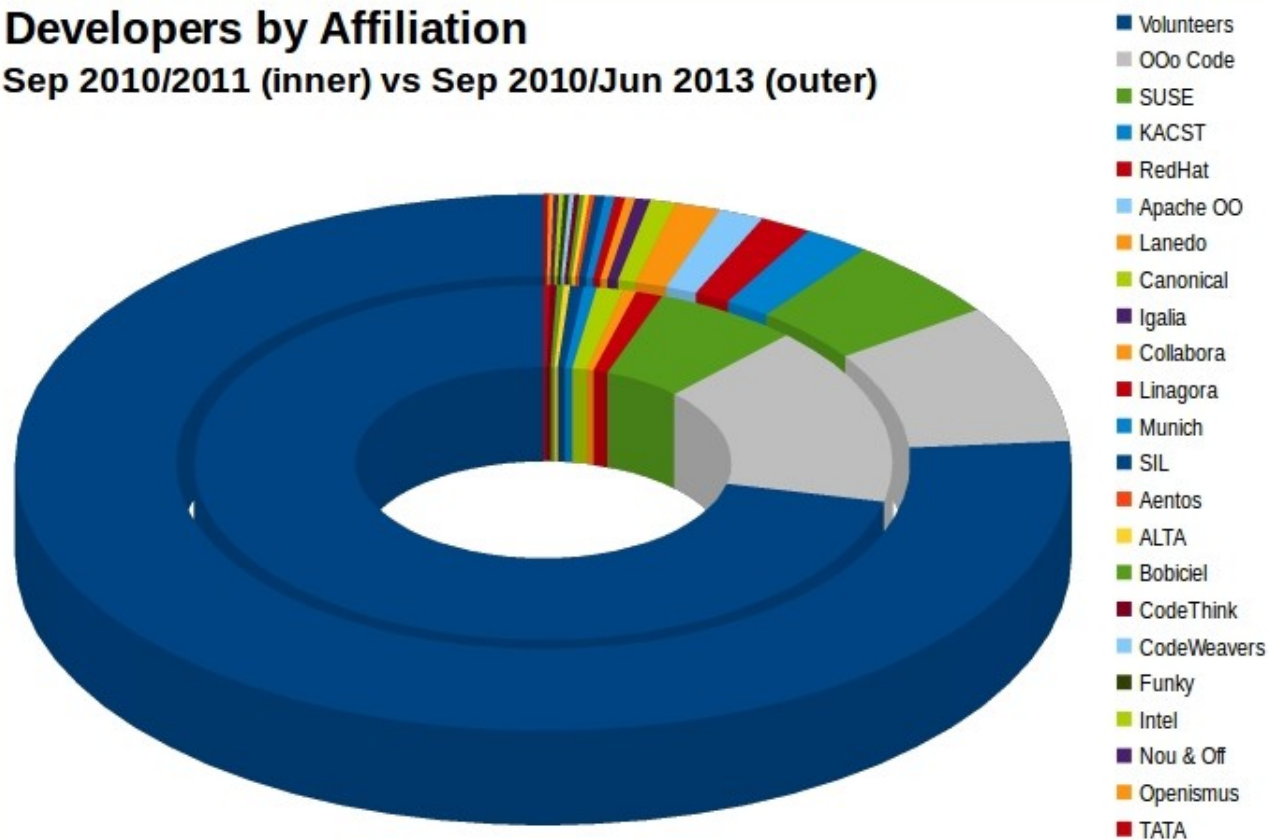
Community

- ~650 Developers (~50 full-time)
- ~110 Languages
- ~30 QA (0 full-time)
- Globally
- Come&Go
- Not only IT-educated people

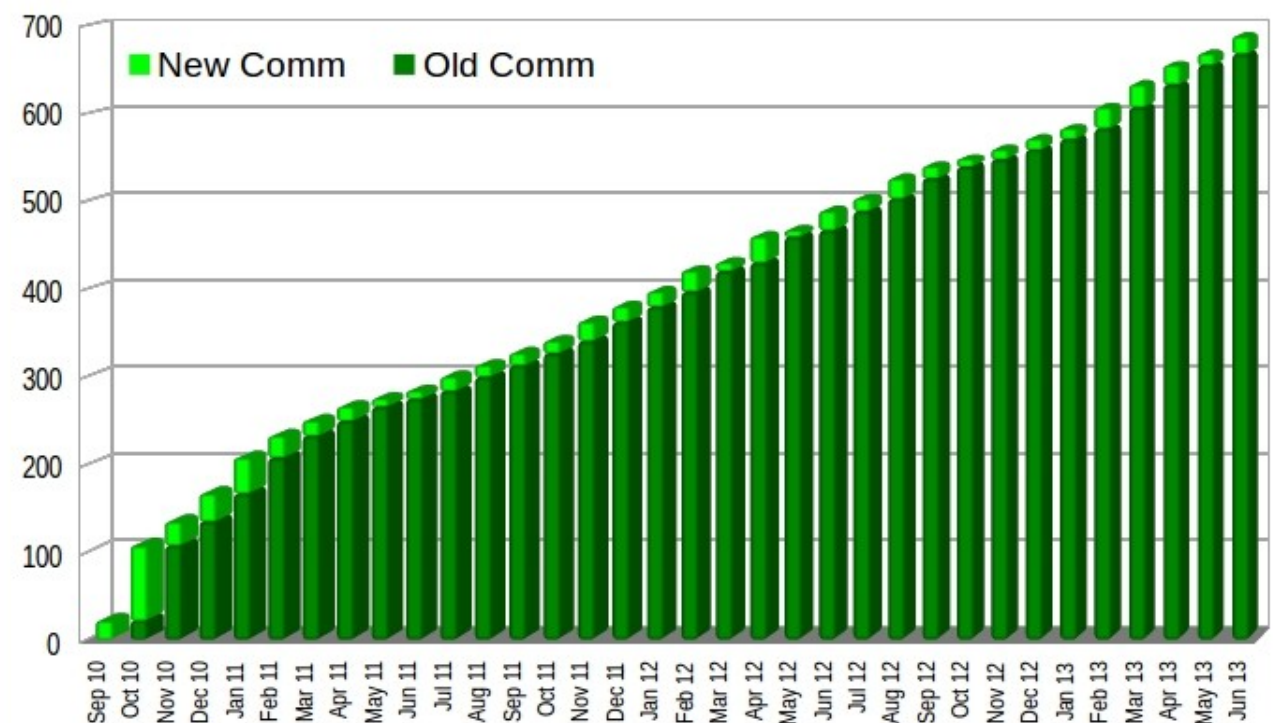
Community

- Document Foundation (~150 members)
- No leading company
- No contributor agreement
- Open processes

Developers by Affiliation
Sep 2010/2011 (inner) vs Sep 2010/Jun 2013 (outer)



Cumulative Number of LibreOffice New Code Committers



Community

- Culture/Code of Conduct
 - Open
 - Welcome
 - Easy
 - Respect
 - Rules

Community

- Meeting People
- Discussions
- Presentations

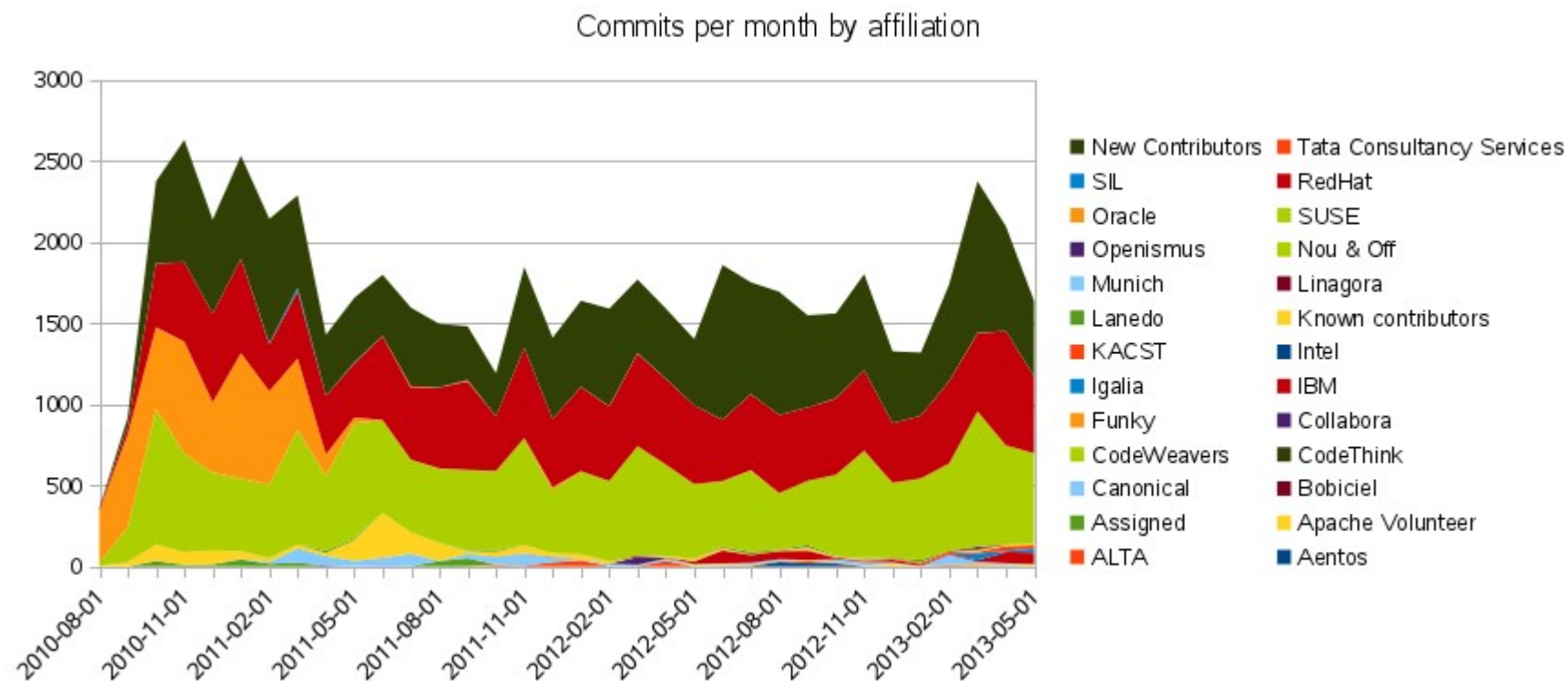


Development

- Componized
- Discontinued components
- Discontinued platforms
- Cluttered & unused code
- Old technology
- Horrible compile-process
- Slow

Development

- ~ 2000 commits a month
- ~ 7.1 Mln lines of code
- ~ 25 Languages (Mainly C++)
- ~ 20 companies



Development

- Major Changes
 - New buildsystem
 - Code cleanup (unused/bad/german code)
 - Other platforms (Android/iOS)
 - API Cleanup
 - More fileformats (Visio/Publisher/Corel Draw)
 - Even more (Lotus Word Pro/MS Works/Wordperfect)
 - Sidebar/Dialogs rework
 - Charts rework
 - Integration Windows 7/Gnome 3/KDE 4
 - Microsoft SmartArt

Development

- Easy Hacks
 - For new /inexperienced people
 - Sorted on difficulty /skill
 - Public list
 - Mentor people
 - Also for QA/Marketing/....

Development

- Releases
 - 3.3 in Januari 2011
 - Every $\frac{1}{2}$ year minor release
 - Every month bugfix release
 - Now at 4.1

Bugtracking

- Bugzilla on bugs.FreeDesktop.org

Before reporting a bug, please read the [bug writing guidelines](#), please look at the list of [most frequently reported bugs](#), and please [search](#) for the bug.

[Hide Advanced Fields](#)

(* = Required Field)

* **Product:** LibreOffice

Reporter: programming@ertai.nl

* **Component:**

Android Impress Remote
BASIC
Chart
ci-infra
contrib
Database
deletionrequest

Component Description
Select a component to read its description.

* **Version:**

4.1.1.1 rc
4.1.1.2 release
4.1.2.1 rc
4.1.2.2 rc
4.1.2.3 release

Severity: normal ▾

Hardware: Other ▾

OS: All ▾

We've made a guess at your operating system and platform. Please check them and make any corrections if necessary.

Priority: medium ▾

Status: UNCONFIRMED ▾

Assignee:

QA Contact:

CC:

Default CC:

Bugtracking

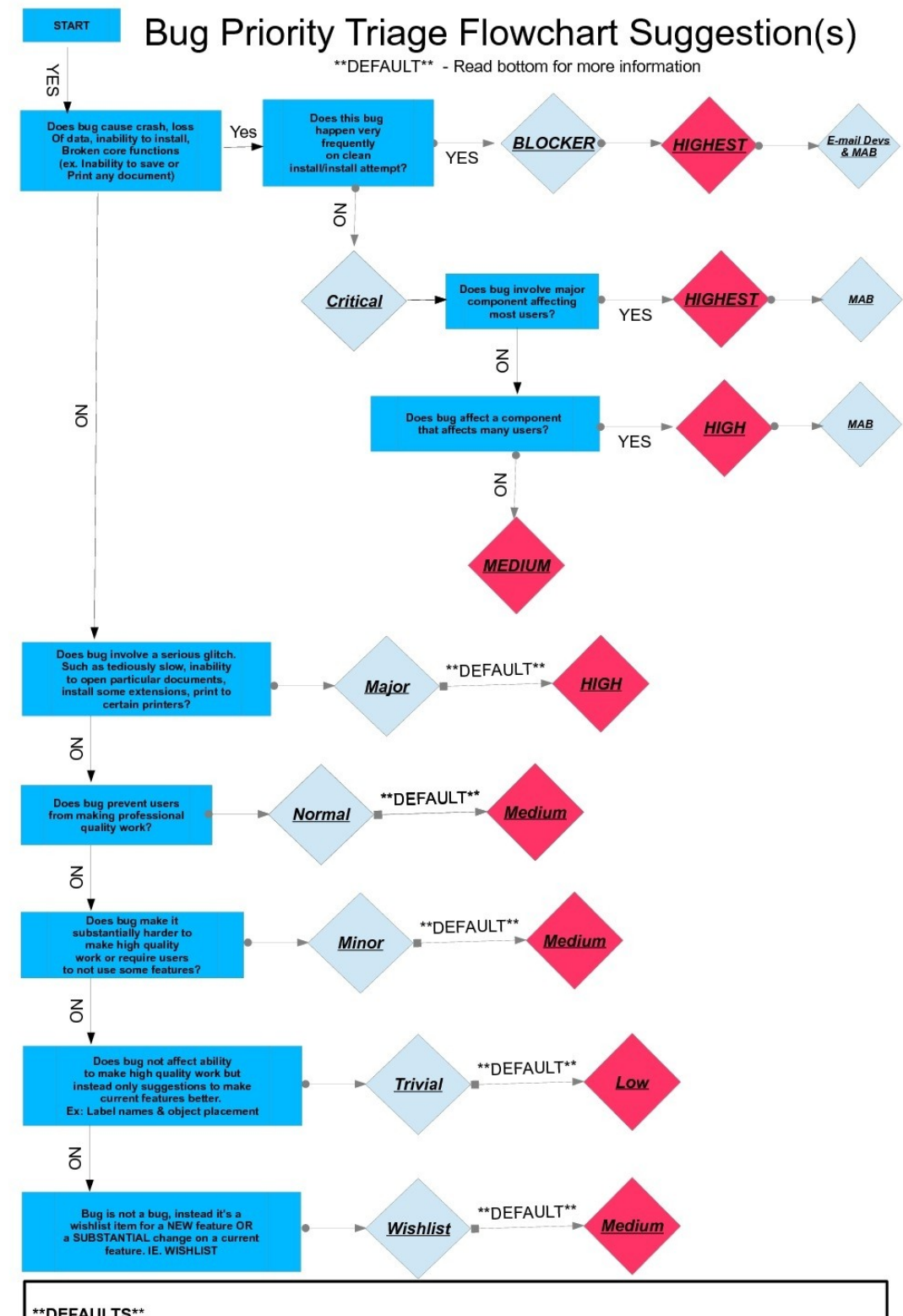
- Stats
 - ~ 24.000 bugs in FDO
 - ~ 6.000 open bugs (25%)
 - ~ 1.000 unconfirmed (4%)
 - ~ 22 new bugs a day

Bugtracking

- For a lot of software (124)
 - (Mis)use of fields
 - Non-applicable values
 - No create-wizard
 - Missing fields
 - To few statistics
- → Own instance

Bugtracking

- HowTo's
 - Clarify
 - Keep current
- EasyHacks
- Help
 - IRC
 - Email



Bugtracking

- Other trackers
 - Fedora
 - OpenSuse
 - Ubuntu
 - (OpenOffice.org / Apache OpenOffice)
 -
- Integration
 - Ask
 - Gerrit

Bugtracking

- Confirming Bugs
 - Duplicates
 - Information/Reproduce
 - Priority/Status
 - Set expert
 - Keywords
- Most Annoying Bugs

Bugtracking

- Bug Submission Agent

The screenshot shows the Bug Submission Agent web interface. On the left is a vertical sidebar with five steps: 1 Sign in, 2 Component, 3 Details (highlighted), 4 Description, and 5 Submit. The main content area is for the 'Details' step. It features a 'Component' dropdown menu set to 'Extensions'. Below this is a grid of 18 icons representing various software components. To the right of the grid is a box titled 'Component Extensions' containing text about applicable subcomponents and a 'Read more ... >' link. Below the grid are four dropdown menus: 'Sub component:' (set to '(Choose one)'), 'Version the bug appeared:' (set to '(Choose one)'), 'Operating system:' (set to '(Choose one)'), and 'Latest known-working version:' (set to 'NONE'). At the bottom left of the main area is a 'Related bug reports' section. At the bottom of the sidebar is a disclaimer and a link to the Bug Submission Assistant source code.

1 Sign in

2 Component

3 Details

4 Description

5 Submit

Component: Extensions

Component Extensions

For all problems with Extensions. Applicable Subcomponents are: [Extensionname](#) for Problems with a particular Extension (please replace *Extensionname* in the the Bugzilla Summary line by the name of the Extension, followed by the

Read more ... >

Sub component: (Choose one)

Version the bug appeared: (Choose one)

Operating system: (Choose one)

Latest known-working version: NONE

Related bug reports

All your contributions will be public in WWW! By clicking the 'Submit' button you irrevocably agree to release your contribution under the CC-BY-SA 3.0 License and the GFDL. If you can't agree to these terms for documents you planned to attach you can state in this report that such a document exists. QA team will discuss with you further proceeding in the bug.

Bug Submission Assistant is published under [GNU GPLv3+](#). Download the sources with git clone <http://www.github.com/tdf/www-bugassistant>.

Bugtracking

- Bug Submission Agent
 - All users
 - Correct options
 - Only required fields
- Multi-language

Testing

- Unittests
- Run every build
- Solve regression → create test

Testing

- All Documents in Trackers (24.500)
- Open/Close-test
- Run periodically

Testing

- BiBisect
 - 1 repository with builds
 - Every 50 commits a build
 - Check for regressions
 - Little knowlegde needed
- <https://wiki.documentfoundation.org/QA/HowToBibisect>

Testing

- MozTrap
 - Structured manual testing
 - No knowledge needed
 - Supports only 1 language
 - Not extensively used yet

Testing

- Run Master/Alpha/Beta
 - Concurrent with Distributions
 - Keep buildable Software
 - Rapid release
 - High quality work required
 - Eat your own dogfood

Testing

- Testparty
 - Every release
 - Involve users
 - Bugtesting
 - Experts ready

Building

- Thunderboxes
 - Build on many platforms
 - Windows
 - Mac
 - Linux
 - Andriod
 - All tests
 - 24/7

Building

- Limit commit access
- Patch reviewing (Gerrit)
- Later in release more reviewing
- Later: Automatic test-build

All

Projects

Documentation

Open

Merged

Abandoned

LibreOffice

Code Review

Register

Sign In

status:open

Search

Search for status:open

ID	Subject	Owner	Project	Branch	Updated	CR	V
▶ I17627004	Add 'redline - paragraph index' to XML node dump	Adam CloudOn	core	master	2:56 PM		
Ie4c8bdb2	resolved fdo#66564 calculate formula cell once if AutoCalc disabled	Eike Rathke	core	libreoffice-4-1-4	12:28 PM	+1	
I46061777	resolved fdo#71589 reimplemented horizontal range lookup	Eike Rathke	core	libreoffice-4-1-4	12:27 PM	+1	
Ibf66f6a9	fdo#46262 Detect XML files with UTF-8 BOM	Maxim Monastirsky	core	master	10:44 AM	-1	

Users

- Mailinglists
- Ask
- For users / By users

The screenshot displays the LibreOffice Ask website. At the top, the LibreOffice logo and 'The Document Foundation' text are on the left, while navigation links for 'tags', 'people', and 'badges' are on the right. Below this, a green navigation bar contains a home icon, 'ALL', 'UNANSWERED', a search bar with the placeholder 'search or ask your question', and an 'ASK YOUR QUESTION' button. The main content area shows a list of questions. The first question is 'setting a keyboard shortcut for line space' with 0 votes, 0 answers, and 8 views, posted 1 hour ago by CrossChris. The second question is 'Writer not responding when saving document containing images' with 1 vote, 1 answer, and 8 views, posted 2 hours ago by mariosv. The third question is 'COUNTIF wouldn't recognize criteria - number formatted as text' with 0 votes, 2 answers, and 11 views. On the right side, there are sections for 'Resources' (including links to Twitter, TDF wiki, Ask site, mailing list, and IRC) and 'Contributors' (showing user avatars).

LibreOffice
The Document Foundation

tags people badges

Hi there! Please sign in help

ALL UNANSWERED search or ask your question ASK YOUR QUESTION

6,077 questions Sort by » by date by activity ▼ by answers by votes RSS

setting a keyboard shortcut for line space
line-spacing hotkeys writer
no votes no answers 8 views
1 hour ago CrossChris

Writer not responding when saving document containing images
saving writer
1 vote 1 answer 8 views
2 hours ago mariosv

COUNTIF wouldn't recognize criteria - number formatted as text
no votes 2 answers 11 views

Resources

- 1 Follow us on Twitter
- Ask on the TDF wiki
- How to use the Ask site
- Join our mailing list
- IRC: #libreoffice

Contributors

Certificates

- Developers
- Migration Professional
- Trainers

Future

- Improve BiBisect
- Own Bugzilla
- Automated builds
- Bring teams more together
- Integrating in LibreOffice
- Social Media/new website
- More Statistics

Questions?



Attribution-NonCommercial-ShareAlike CC BY-NC-SA



LibreOffice
The Document Foundation

Useful Links

- Website: <https://www.libreoffice.org>
- QA-Team: <https://wiki.documentfoundation.org/QA>
- Bugzilla: <http://bugs.freedesktop.org>
- BSA: <http://www.libreoffice.org/get-help/bug/>
- BiBisect: <https://wiki.documentfoundation.org/Bibisect>
- MozTrap: <https://wiki.documentfoundation.org/Moztrap>
- Gerrit: <https://gerrit.libreoffice.org/>